

Dixie 350 Repair Bracket

New Model “Dixie 350” Bracket for RCS and Pipe Piles (Patent pending)

- One piece ductile iron casting - no welded parts
- “Flush Mount” reduces the centroid axis and improved load transfer
- 100 KIP (50 tons) ultimate capacity
- Versatile bracket fits 1-1/2”, 1-3/4” and 2” RCS shafts & 2-7/8” and 3-1/2” pipe piles
- Hot dip galvanized ASTM A-153
- Lighter weight – easier to handle in tight places
- Option to add 12” x 30” plate for additional bearing load distribution
- ICC AC358 Acceptance Criteria For Helical Foundation Systems and Devices

Bracket Assembly Catalog #	For Pile Type	System Rating (pile and bracket)	Weight each lbs	Standard pack qty
Dixie350B1	1-1/2” D6 RCS	30/60 KIP *	73	10
Dixie350B1	1-1/2” D7 RCS	35/70 KIP *	73	10
Dixie350B1	1-3/4” D10 RCS	50/100 KIP*	73	10
Dixie350B2	2” D15 RCS	60/120 KIP **	82	10
Dixie350B3	2-7/8” Pipe, sch 40	30/60 KIP *	70	10
Dixie350B3	2-7/8” Pipe, sch 80	40/80 KIP*	70	10
Dixie350B3	3-1/2” Pipe, sch 40	40/80 KIP *	70	10
Dixie350B3	3-1/2” Pipe, sch 40	50/100 KIP*	70	10
Note: Dixie350 bracket rating 50/100 KIP (25/50 tons)				
Hot dip galvanized to ASTM A-153				
Use RLH1 Lifting Assembly				
Bracket furnished with holes and slots to bolt to foundation - recommended				
* System capacity limited by pile rating				
** Limited by bracket rating				



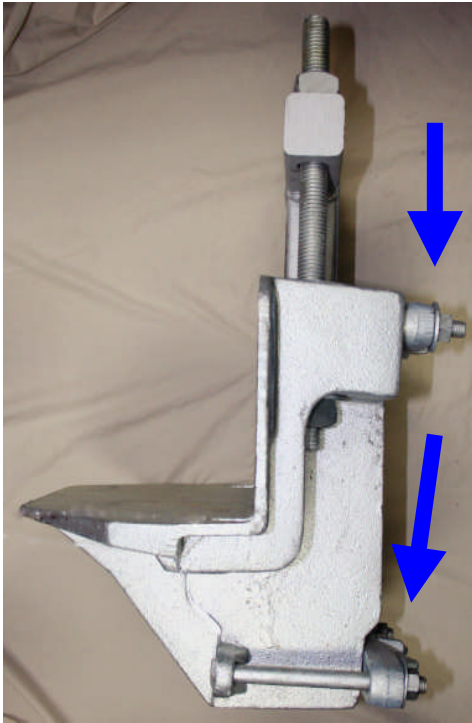
Building Solid Foundations

11411 Addison Avenue • Franklin Park, IL 60131
 T: (847) 455-0014 F: (847) 455-0029 • www.macleancleanpower.com

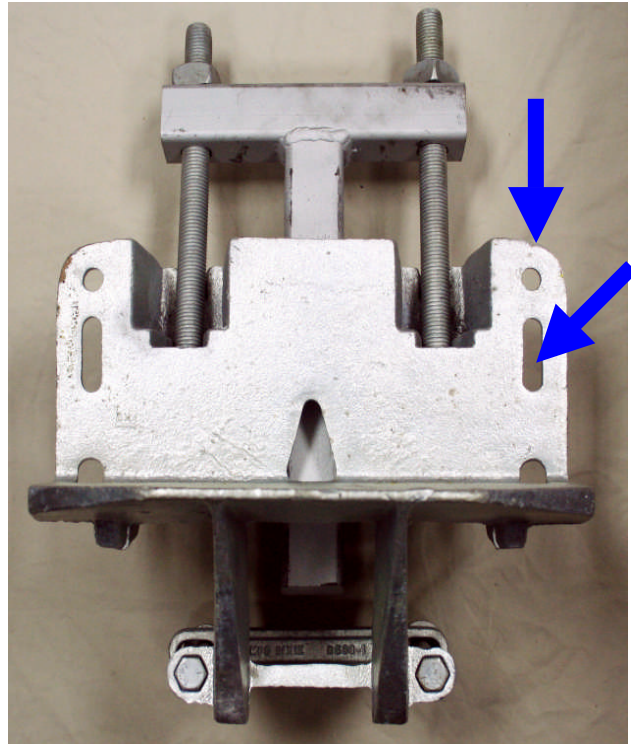
Dixie 350 Repair Bracket

Bracket assembly furnished with either “T-bar” (shown) or “T-pipe”

One-piece cast ductile iron bracket – no welds



Guide plates to maintain alignment during installation



Slots and holes provided for securing to foundation

