

P28 Series 2-7/8" (Schedule 80) Helical Pipe Piles

New MacLean-Dixie 2-7/8" "Strength Squared™" Helical Pipe Piles/Anchors (Patent Pending) for Compression and Tension Applications



P28 Series 2-7/8" (O.D.) Schedule 80 Pipe Pile	
Torque Capacity (ft-lbs)	9,000 ft-lbs
Tension/Compression Capacity (pounds-force)	100/72 KIPS (50/36 tons)
Pipe Pile O.D. (inches)	2-7/8"
Pipe Pile Wall thickness (inches)	Schedule 80 (.276" wall)
Pipe Material	ASTM A500 Grade B
Helix Material	AISI Grade 1011/1018 HSLA 55
Coupling Material	AISI 8620 ASTM A-958 SC1045
RCS lead option for combo pile	1-1/2" RCS



Building Solid Foundations

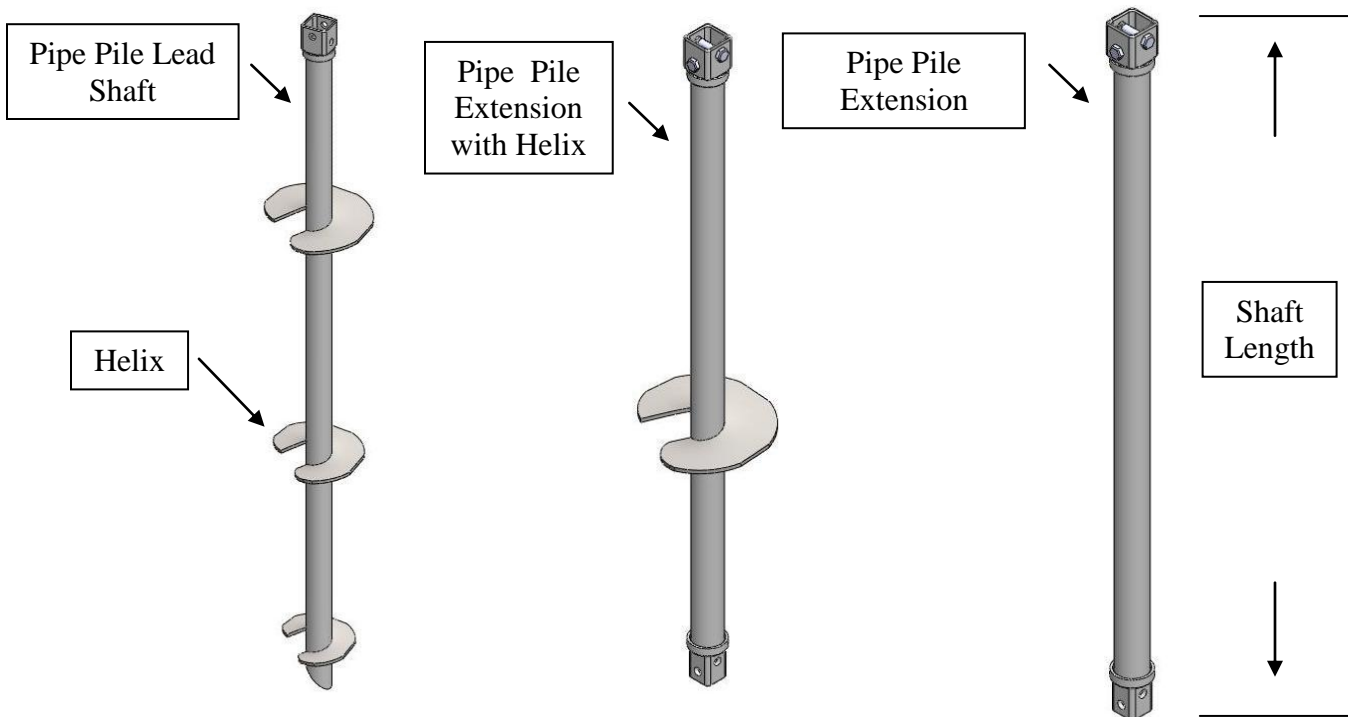
11411 Addison Avenue • Franklin Park, IL 60131

T: (847) 455-0014 F: (847) 455-0029 • www.macleandixie.com

P28 Series 2-7/8" (Schedule 80) Helical Pipe Piles

Features and Benefits:

- For Tension and Compression loads
- For new foundation construction or repair
- Installed with no vibration
- Available for immediate use --- no concrete or grout to cure
- No spoils
- Square engagement coupling system – no bolts in shear during installation – no elongated or torn bolt holes and no bent bolts during installation
- Improved productivity. Bolt holes align for faster assembly – just insert next extension and add bolt. No alignment issues when in tight quarters
- Greater torque capacity for size – best pipe pile performance value
- Best used in dense soils where higher torque requirements compared to pipe piles
- Can also used with D6 or D7, 1-1/2" RCS leads as combo piles where additional overturning resistance is required
- Helical piles/anchors may be removed
- Contributes to "Green" environment
- Available standard hot dip galvanized ASTM A-153 or black (not coated)



P28 Series 2-7/8" (Schedule 80) Helical Pipe Piles

Catalog Number *	Description	Length	Helices
P28H64S8	2-7/8" O.D. pipe x 64" helical lead with 8" (3/8") helix	64"	8
P28H64S10	2-7/8" O.D. pipe x 64" helical lead with 10" (3/8") helix	64"	10
P28H64S12	2-7/8" O.D. pipe x 64" helical lead with 12" (3/8") helix	64"	12
P28H64S810	2-7/8" O.D. pipe x 64" helical lead with 8-10" (3/8") helix	64"	8-10
P28H64S1012	2-7/8" O.D. pipe x 64" helical lead with 10-12" (3/8") helix	64"	10-12
P28H84S8	2-7/8" O.D. pipe x 84" helical lead with 8" (3/8") helix	84"	8
P28H84S10	2-7/8" O.D. pipe x 84" helical lead with 10" (3/8") helix	84"	10
P28H84S12	2-7/8" O.D. pipe x 84" helical lead with 12" (3/8") helix	84"	12
P28H84S810	2-7/8" O.D. pipe x 84" helical lead with 8-10" (3/8") helix	84"	8-10
P28H84S1012	2-7/8" O.D. pipe x 84" helical lead with 10-12" (3/8") helix	84"	10-12
P28H84S81012	2-7/8" O.D. pipe x 84" helical lead with 8-10-12" (3/8") helix	84"	8-10-12
P28H84S101214	2-7/8" O.D. pipe x 84" helical lead with 10-12-14" (3/8") helix	84"	10-12-14
P28HE42S14	2-7/8" O.D. pipe x 42" extension with 14" (3/8") helix	42"	14
P28HE64S12	2-7/8" O.D. pipe x 64" extension with 12" (3/8") helix	64"	12
P28HE64S14	2-7/8" O.D. pipe x 64" extension with 14" (3/8") helix	64"	14
P28HE84S14	2-7/8" O.D. pipe x 84" extension with 14" (3/8") helix	84"	14
P28HE42	2-7/8" O.D. pipe x 42" extension	42"	-----
P28HE64	2-7/8" O.D. pipe x 64" extension	64"	-----
P28HE84	2-7/8" O.D. pipe x 84" extension	84"	-----
P28HE124	2-7/8" O.D. pipe x 124" extension	124"	-----
Note: Standard galvanized. Add suffix "U" for black (not galvanized) *Other sizes are available upon request			
Note: Warranty which includes ICC AC358 will be deemed invalid if all material for either the foundation pile or tension anchor is not MacLeanDixie.			



Building Solid Foundations

11411 Addison Avenue • Franklin Park, IL 60131

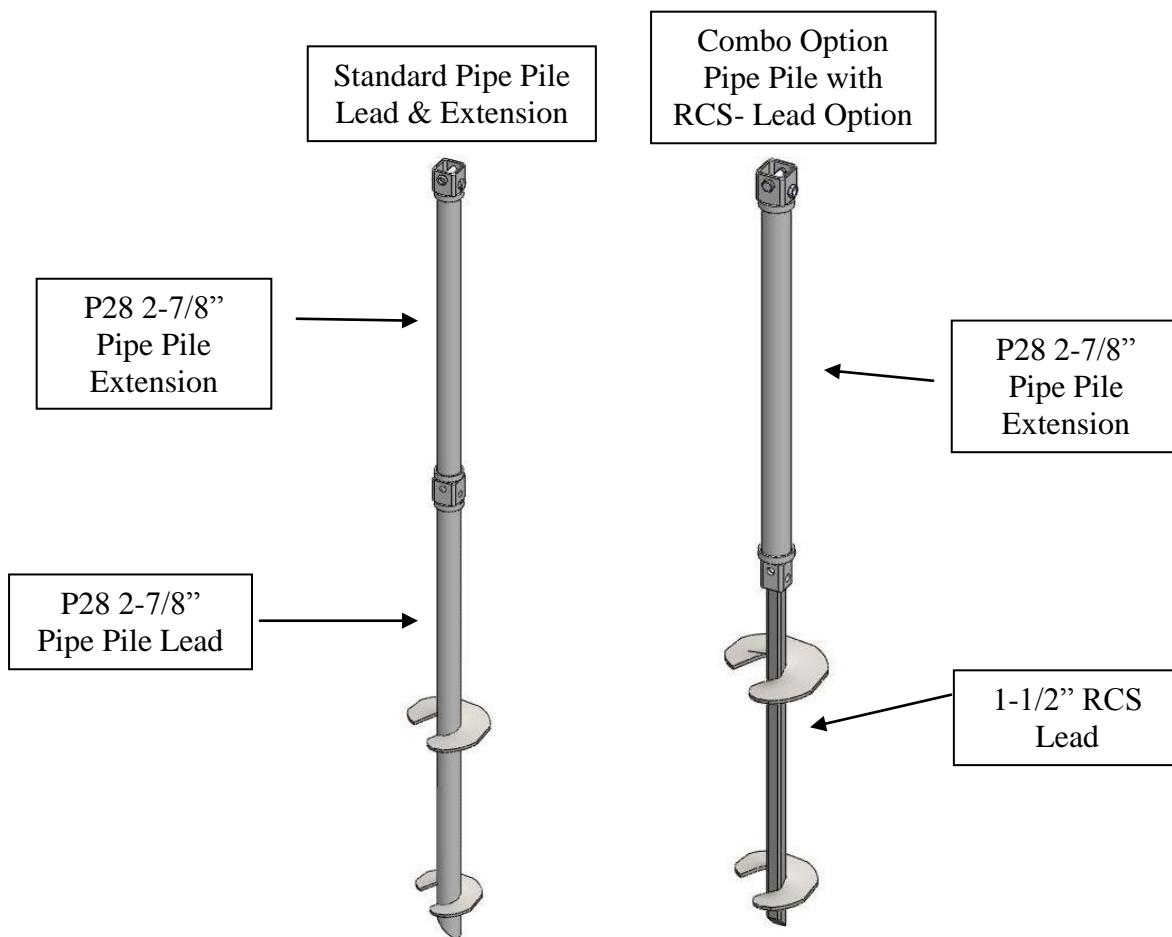
T: (847) 455-0014 F: (847) 455-0029 • www.macleandixie.com

P28 Series 2-7/8" (Schedule 80) Helical Pipe Piles

Combo Piles

The MacLeanDixie Strength Squared™ coupling system is a versatile system that provides additional flexibility and economic value by combining the benefits of a RCS (Round Corner Square) lead with the column strength of the pipe pile.

The MacLeanDixie D6 or D7 series 1-1/2" RCS lead can be used to replace the P28 lead. The 1-1/2" RCS lead will facilitate advancing into a tough soil strata with less torque than the pipe pile lead. The P28, 2-7/8" pipe pile extensions are then used to provide greater compression and lateral capacity.



P28 Series 2-7/8" (Schedule 80) Helical Pipe Piles

MacLean-Dixie "Strength Squared™" coupling system (Patent pending)



2-bolt Cross Connection



Pipe pile and coupling system remains undamaged during installation

Conventional Pipe Piles - Elongated/torn holes with round pipe pile coupling & bolts in shear.



P28 Series 2-7/8" (Schedule 80) Helical Pipe Piles

MacLean-Dixie Helical Piles and Anchors undergoing rigorous testing at an IAS accredited lab to ICC AC358 Acceptance Criteria For Helical Foundation Systems and Device. Ongoing quality control program per AC10 with inspections by an IAS accredited inspection agency per AC98



Full scale field testing-
compression/tension/lateral



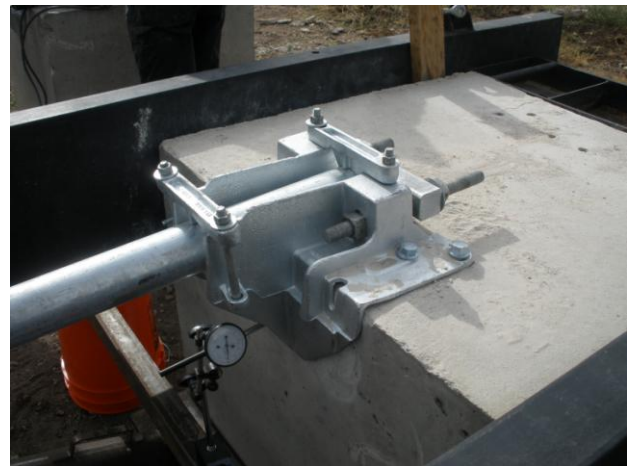
Measuring Deflection



Helix Strength Test



Torsion Testing



Bracket Testing